

Outcome & Indicator

Baseline & the story behind it

Current Situation

What can be done better?

Proposed Outcome: Reduce levels of crime and the impact of crime for the benefit of the community.

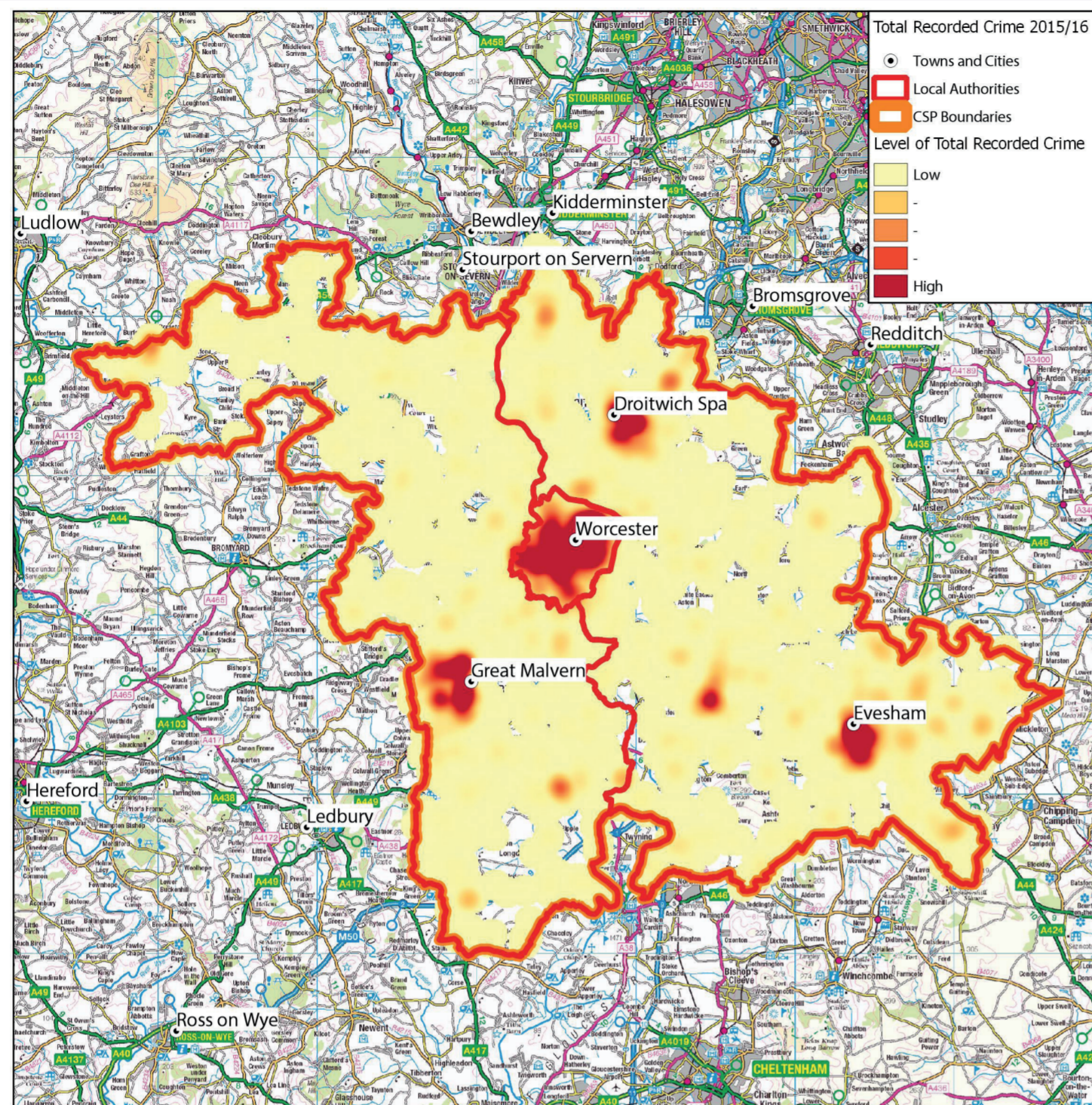
Police & Crime Plan : To understand crime and the cause of crime.

Alliance Control Strategy Priorities:

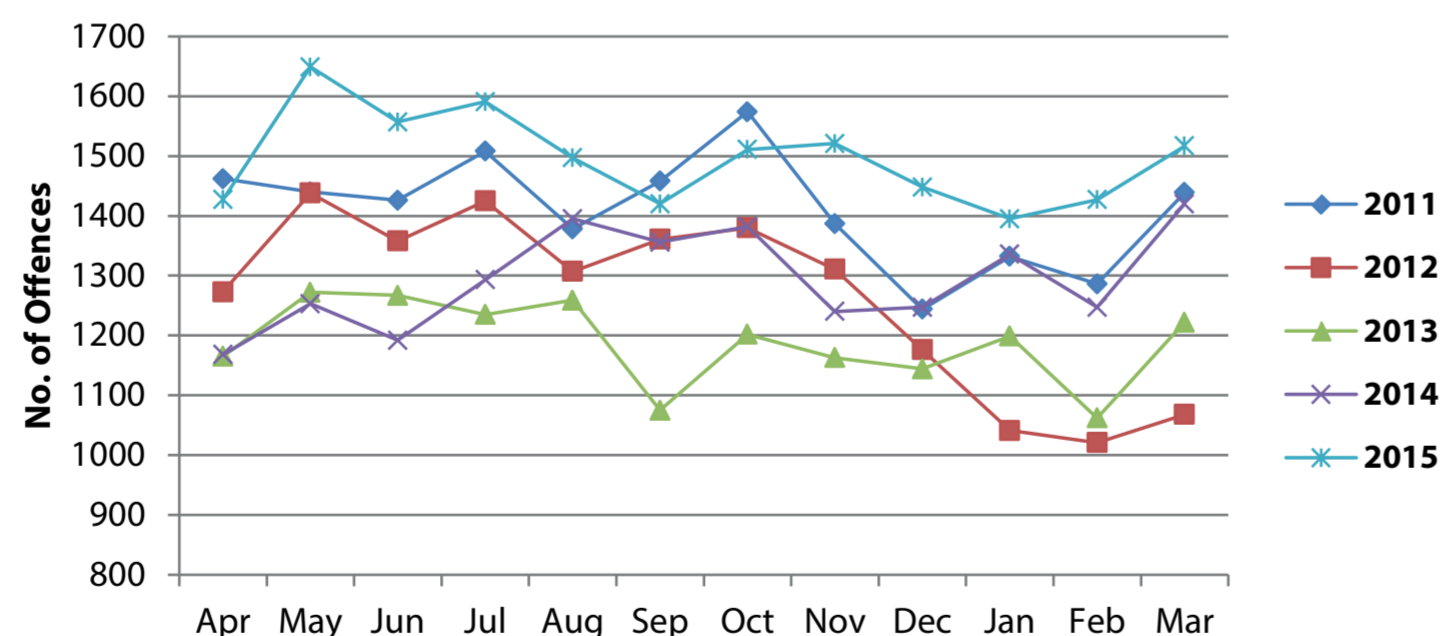
- Strategic Policing Requirement
- Terrorism
- Serious and Organised Crime
- Cyber Crime
- Threats to Public Order
- Civil Emergencies
- Child Sexual Exploitation
- Alliance Priorities
- Cyber Crime
- Child Sexual Exploitation
- Organised Crime Groups
- Rape and Sexual Assault
- Domestic Abuse
- Killed and Seriously Injured RTC's
- Alliance Intelligence Requirement
- Modern Slavery and Human Trafficking
- Female Genital Mutilation
- Serious Acquisitive Crime
- Violent Crime
- Pipeline Incursions

Key Indicators:

- Total Recorded Crime
- Key Markers
- Geographical Profiles
- Harm Caused
- CSP Identified Priorities



Total Recorded Crime



	TRC	Trend
2011/12	16,934	↓
2012/13	15,159	↓
2013/14	14,265	↓
2014/15	15,529	↑
2015/16	17,960	↑
2016/17	1,373	→

Data Sources

- West Mercia Police Performance Unit Crime by Line 2010 - 2015
- West Mercia Police Performance Unit Dashboard

Story behind the baseline

- Total recorded crime was reduced by 8% in the period between 2010/11 to 2014/15.
- However, there has been a 15% increase in TRC between 2014/15 and 2015/16.
- Changes to ethical reporting will have had a level of impact on total recorded crime.
- The top five increasing crimes in terms of percentage of change, equate to 1% of the total crime rate.
- Assault (with or without injury) makes up 31% of the total recorded crime in South Worcestershire (2015/16) and has seen a 60% year on year increase.

Implications

- Fear of and perception of crime can impact on social cohesion and communities.
- Home Office Research found total cost of crime against individuals and households was £36,166 million in 2003/04¹.
- Increase in reported crime coming at a time of reduced resources.
- Community / decision makers not understanding impact of reporting changes on crime levels.

¹ The Economic and Social Costs of Crime Against Individuals and Households 2003/04

Partners

- Police and Crime Commissioner
- West Mercia Police
- Wychavon CSP
- Malvern Hills CSP
- Worcester City CSP
- Clinical Commissioning Group
- Hereford and Worcester Fire and Rescue Service
- Warwickshire and West Mercia Community Rehabilitation Company
- National Probation Service
- West Mercia Youth Offending Service

Example Projects / Services

- Door Knocking
- Detached Team
- Community Wardens

Identified Risks

- Cuts will reduce the Council's ability to drive the Community Safety Partnership.
- Potential reduction in Local Authority funding resulting from Comprehensive spending review.
- Impact of changing and growing population.
- Challenge of working a two tier authority.
- Risk to "tasking funds" and resulting flexibility of approach.

Gap Analysis

- Programmes to respond to increase in assault, outside of domestic abuse.
- Community consultation to address fears and perceptions of crime.
- Meaningful evaluation of the impact in changes in reporting.
- Intelligence and analysis to further understand causes of changes to crime profile.

Police and Crime Plan Outcomes

- To reduce the volume of violent crime with an emphasis of addressing the harm caused by alcohol through partnership working.
- To reduce the volume of anti-social behaviour incidents.
- To reduce re-offending and bring offenders to account.
- To develop and implement a business crime strategy.
- To work in partnership to protect the most vulnerable people in our society.
- To deliver a supportive and effective response to victims and witnesses.
- To work with the Safer Roads Partnership to reduce the number of casualties on our roads.
- To meet the requirements of the Strategic Policing Requirement.
- To reduce the harm caused by drugs with a focus on treatment, and targeting those that cause the most harm.

Outcome Star/s:

- Community Star;
- Drug and Alcohol Star;
- Empowerment Star;
- Family Star, Family Star (Early Years) and Family Star Plus;